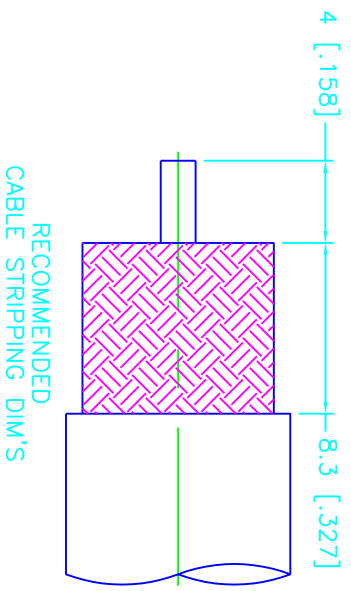
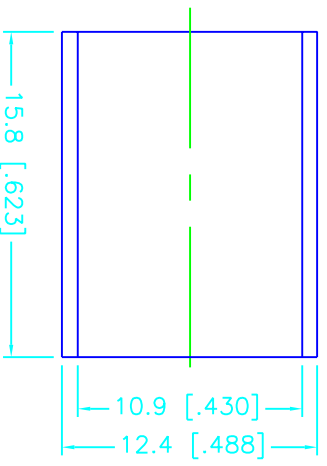
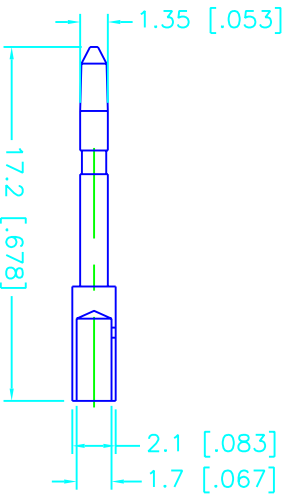
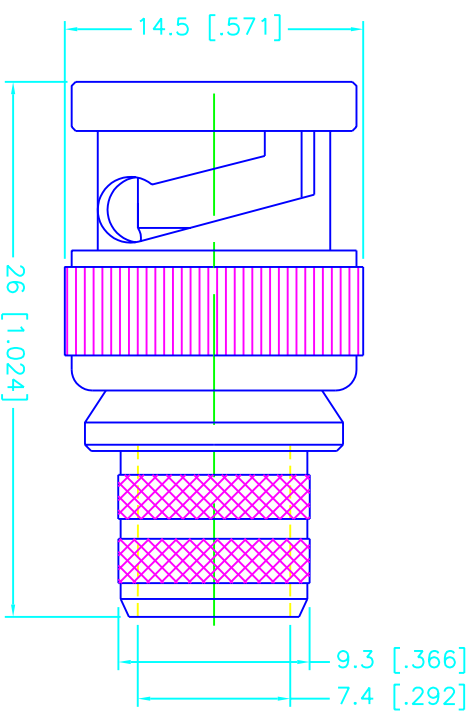


REV.	DATE
NC	09/30/99

DESCRIPTION
INITIAL RELEASE



RECOMMENDED
CABLE STRIPPING DIM'S



DESCRIPTION	MATERIAL	FINISH	UNLESS OTHERWISE SPECIFIED DIMENSIONS ARE IN MILLIMETERS FOR CUSTOMER REFERENCE ONLY	APPROVALS	DATE	TITLE	SCALE	PART NO.	DWG. NO.	SHEET	REV.
1 BODY	BRASS	NICKEL	DIMENSIONS IN [] ARE IN INCHES TOLERANCES FOR MILLIMETERS ARE: 0.5-6 = ± 0.2 6-30 = ± 0.4 30-120 = ± 0.6 120-315 = ± 1 315-1000 = ± 1.6 1000-2000 = ± 2.4	DRAWN	09/30/99	BNC CRIMP PLUG -RG11/U 14-AWG CONTACT (FOR BELDEN 9292, 8213 CABLE - 75ohms)	A	99001	112606.DWG	1 OF 1	NC
2 INSULATOR	TEFLON	NATURAL		CHECKED							
3 CONTACT PIN	BRASS	GOLD		ISSUED							
4 FERRULE	COPPER	NICKEL									
5											
6											
7											
8				DO NOT SCALE DRAWING							

