

1

2

3

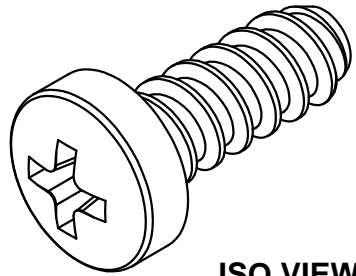
4

5

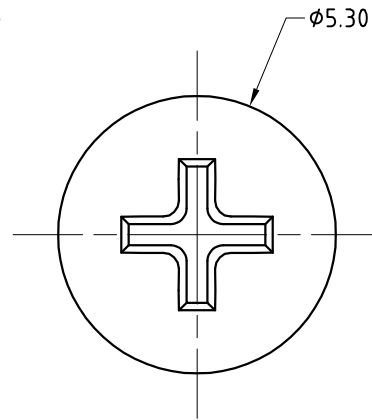
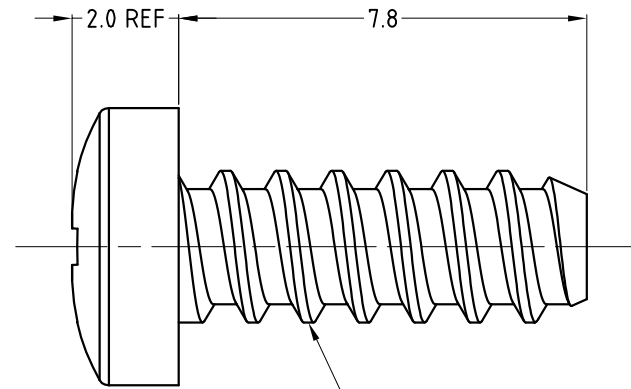
6

A

A



ISO VIEW

 $\phi 5.30$ 

SELF-TAPPING SCREW WITH THREAD 2.9x1.06  
AND TRI-RONDULAR CONFIGURATION



B

B

C

C

D

D

**NOTE:**

1. MATERIAL: CASE HARDEN 76-127 $\mu$ m (0.003" - 0.005"), 55-60C
2. FINISH: MATT BLACK COATING

E

E

F

F

UNLESS OTHERWISE SPECIFIED TOLERANCE TO BE		THIS DOCUMENT IS THE PROPERTY OF AMPHENOL AUSTRALIA PTY. LTD.. NO PART THEREOF MAY BE REPRODUCED AND USED WITHOUT THE PRIOR WRITTEN CONSENT OF THE OWNER			0	FIRST ISSUE	L.V	24-10-05	----
LINEAR	ANGULAR	CAD FILE: 52500002734110			DRN: L.V	DATE: 24-10-05	TITLE:		
X ± 0.5	X° ± 1°	MATERIAL: REFER TO NOTE 1			CKD: M.N.H	DATE: 24-10-05	2.9x1.06 SELF-TAPPING SCREW		
X.X ± 0.1	X°X' ± 30'	FINISH: REFER TO NOTE 2			APP'D: P.M	DATE: 24-10-05	Amphenol Australia Pty Ltd, 2 Fireways Blvd, Keysborough, Vic 3173		
X.XX ± 0.05	X°X'X" ± 15"	DO NOT SCALE			DIMENSIONS IN MILLIMETRES	SCALE: 7:1 UOS	PART No: 52500002-734	SIZE: A4	52500002-734-1
		THIRD ANGLE PROJECTION		SCALE: 7:1 UOS		PART No: 52500002-734	SIZE: A4	52500002-734-1	SHEET 1 OF 1

1

2

3

4

5

6