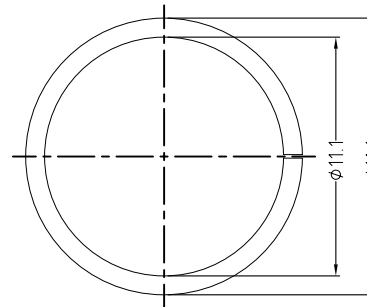
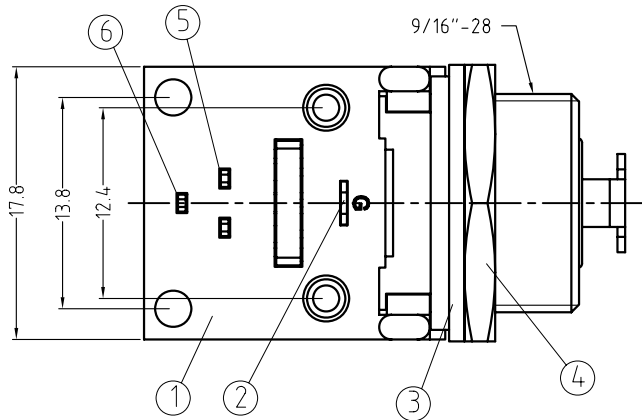
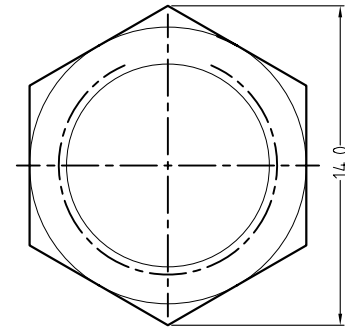
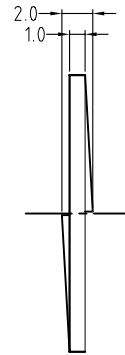


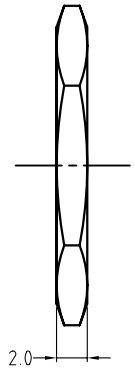
PCB LAYOUT



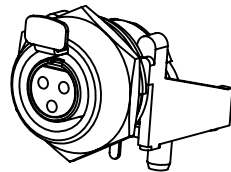
SPRING WASHER



METAL NUT



DESCRIPTION	MATERIAL & FINISH	QTY
15	PUSH LEVEL Brass/Ni Plated	1
14	INSULATOR PPS/Black	1
13	METAL SHELL Brass/Ni Plated	1
12	SOCKET CONTACTS Brass/Au Plated	4
11	CIRCUIT BOARD FIBER GRASS	1
10	INSULATOR PPS/Black	1
9	SPRING SUS 304/Ni Plated	1
8	LATCH SPRING SUS 304/Ni Plated	1
7	MACHINED SHELL Brass/Ni Plated	1
6	CONTACTS Brass/Au Plated	2
5	CONTACTS Brass/Au Plated	2
4	METAL NUT Brass/Ni Plated	1
3	SPRING WASHER SUS 304/Ni Plated	1
2	GROUND CONTACT Brass/Ni Plated	1
1	SUPPORT PA6/Black	1



ISO VIEW
(SCALE 1:1)

Notes:
1. Part must conform to RoHS compliance
2. Plastic parts conform to UL94 V-0 compliant.

Specification: Electrical
Contact Resistance: <0.03 ohm
Insulation Resistance: >500Megaohm
Dielectric Strength: 1000VDC
Rated Current: 5A

Mechanical
Mating: >5000 cycles
Insertion/withdrawal Force: >10N & <30N.

UNLESS OTHERWISE SPECIFIED TOLERANCE TO BE		THIS DOCUMENT IS THE PROPERTY OF AMPHENOL AUSTRALIA PTY. LTD.. NO PART THEREOF MAY BE REPRODUCED AND USED WITHOUT THE PRIOR WRITTEN CONSENT OF THE OWNER				0	FIRST ISSUE	MH	04-10-12	----
LINEAR	ANGULAR	REV.	CHANGE DETAILS	BY	DATE	CHG/No				
X ± 0.50 X,X ± 0.25 X,XX ± 0.10	X° ± 1° X°X' ± 30' X°X'X" ± 15"	CAD FILE: 55010859000110	DRN: MH	DATE: 04-10-12	TITLE: MINI XLR 3 SKT FEMALE PANEL MOUNT RA PCB CUSTOMER DRAWING					
BREAK ALL SHARP EDGES AND REMOVE ALL BURRS		MATL: SEE NOTES	CKD: MH	DATE: 04-10-12						
DO NOT SCALE		FINISH: SEE NOTES	APP'D: PM	DATE: 04-10-12						
DIMENSIONS IN MILLIMETRES		THRD ANGLE PROJECTION	SCALE: 2 : 1	PART No: AG3FCCH	SIZE: A4	Amphenol Amphenol Australia Pty.Ltd, 2 Freeways Blvd, Keysborough, Vic.3173 DRAWING NO. 55010859-000-1 SHEET 1 OF 1				