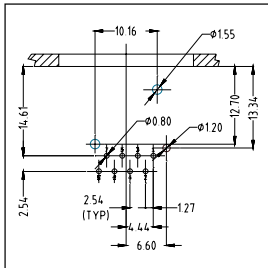
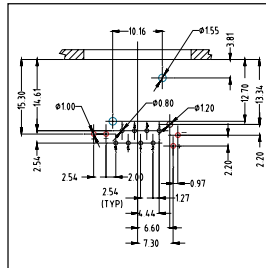


XLrNET A, B AND D TYPE SERIES

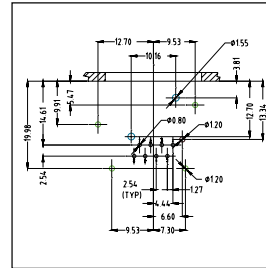
* Applicable to 3 (Class D), 5 (CAT5E) and 6 (CAT6), where available



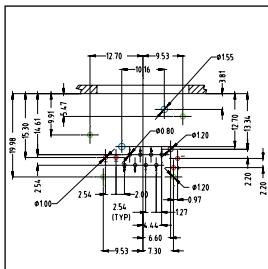
RJX8FA*H
RJX8FA*HB



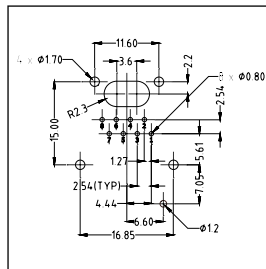
RJX8FB*HRGB
RJX8FB*HRYB
RJX8FB*HRRB
RJX8FB*HGRB
RJX8FB*HGYB
RJX8FB*HGGB



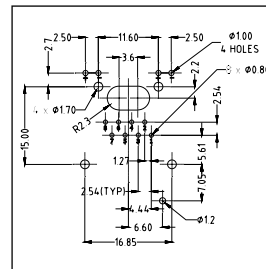
RJX8FB*HEB



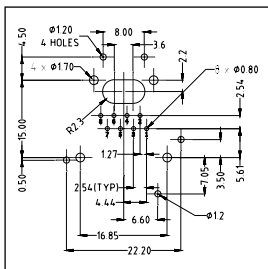
RJX8FB*HRGEB
RJX8FB*HRYEB
RJX8FB*HRRB
RJX8FB*HGREB
RJX8FB*HGYEB
RJX8FB*HGGB



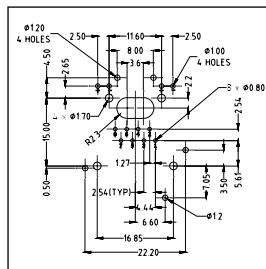
RJX8FA*VB
RJX8FB*VB



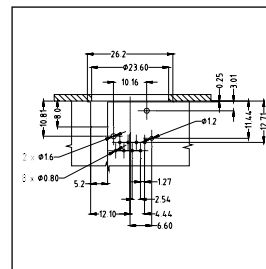
RJX8FB*VRGB
RJX8FB*VRYB
RJX8FB*VRRB
RJX8FB*VGRB
RJX8FB*VGYB
RJX8FB*VUUB



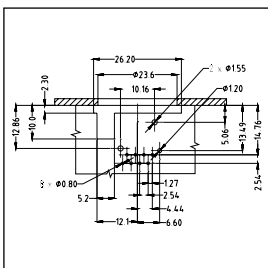
RJX8FB*VEB



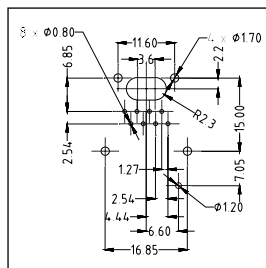
RJX8FB*VRGEB
RJX8FB*VRYEB
RJX8FB*VRRB
RJX8FB*VGREB
RJX8FB*VGYEB
RJX8FB*VUUEB



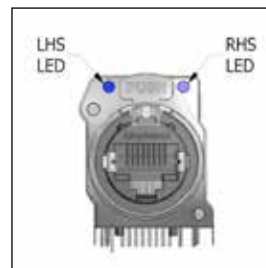
RJX8FD*HB
(Front Mounting)



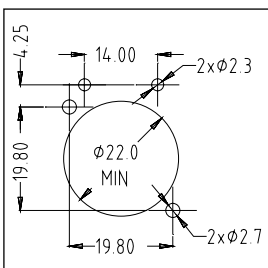
RJX8FD*HB
(Rear Mounting)



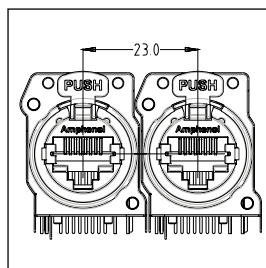
RJX8FD*VB



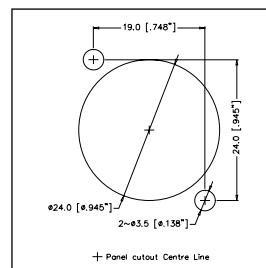
LED Arrangement
(Front view)



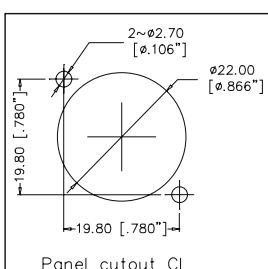
PANEL CUTOUT
A and B type
with LED's



XLrnet
MOUNTING
PITCH /
A and B Type



D Type



A and B Type

