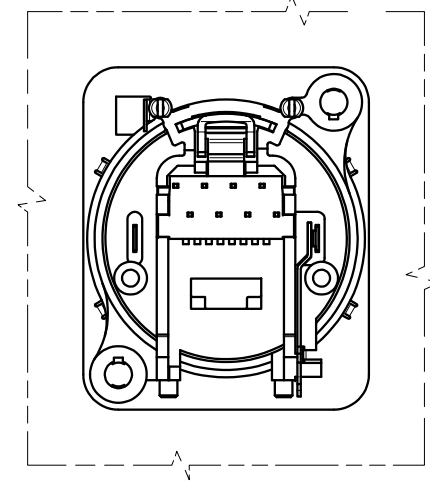
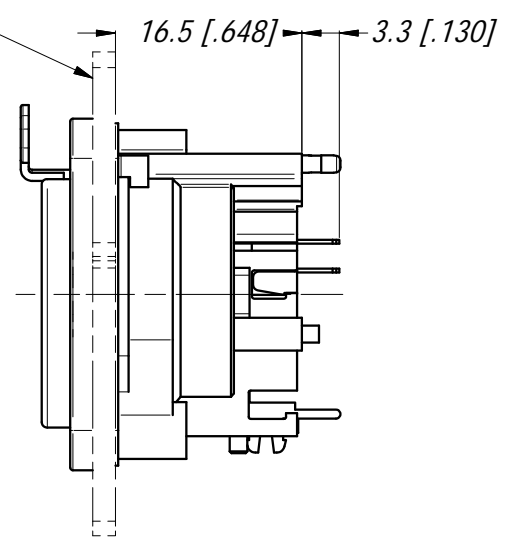
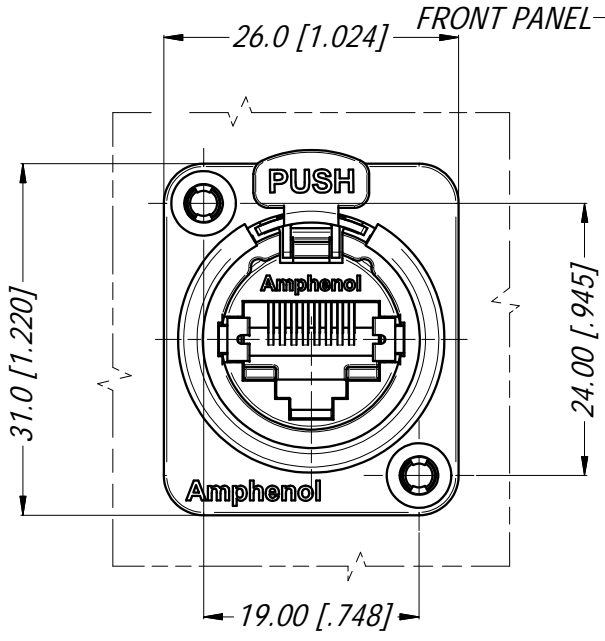
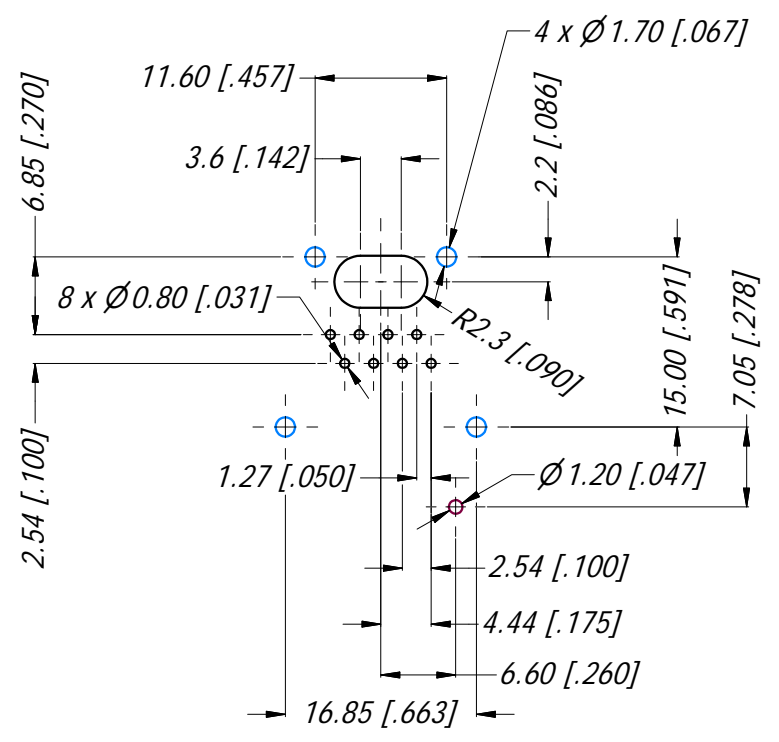


METAL FLANGE ASSEMBLED AT PANEL REAR SIDE

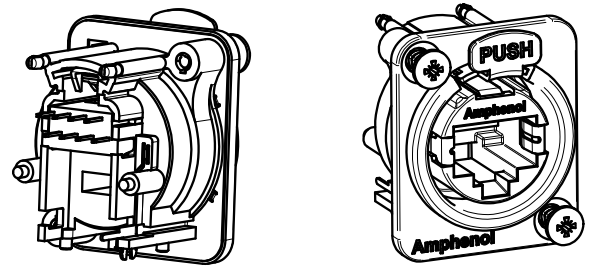


METAL FLANGE ASSEMBLED AT PANEL FRONT SIDE



PCB LAYOUT
3:2
(CONNECTOR REAR VIEW)

- RJ45 CONTACTS
- RJ45 SHELL GROUND CONTACT
- CONNECTOR LOCATION PINS



3D VIEW
1:1

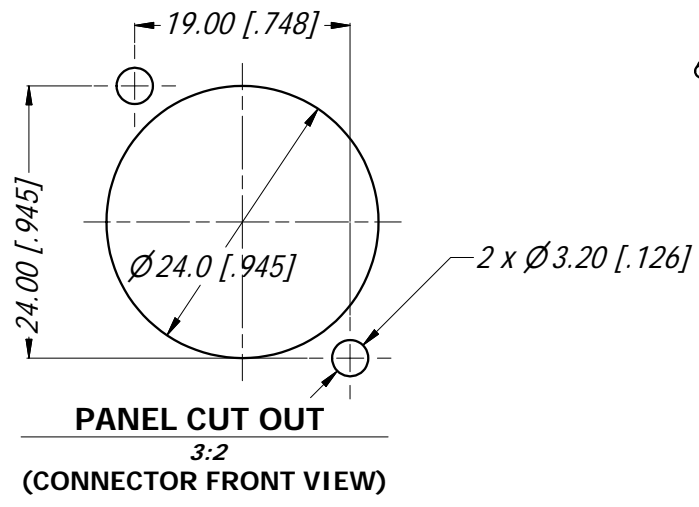
SPECIFICATIONS:

1. MATERIALS:

- PLASTIC INSERT & HOUSING: HIGH TEMPERATURE THERMOPLASTIC FLAMMABILITY RATING UL94V-0 DSM Stanyl, 30% BLACK
- FRONT METAL SHELL: ZINC ALLOY ZAMAK 3, NICKEL PLATE.
- CONTACTS: PHOSPHORE BRONZE, 1.27 µm GOLD PLATE ON MATING SURFACES, 1.27 µm NICKEL MIN UNDERPLATE. 3.81 µm MIN MATTE TIN ON CONTACT TAILS.
- LATCH LOCK AND SPRING: SPRING STEEL, NICKEL PLATE.
- EMI/RFI HOOD: BRASS, TIN PLATE

2. ELECTRICAL CHARACTERISTICS:

- RATED VOLTAGE: 125 VAC
- TYPICAL CONTACT RESISTANCE: 20 mOhm
- INSULATION RESISTANCE: >500 MOhm
- DIELECTRIC STRENGTH: 1000 VAC, 60 SECONDS
- TRANSMISSION SPECIFICATION/CLASS: COMPLIES WITH CAT5e 1000 BASE-T OR CLASS D 10/100 BASE-T PER EIA-568-C.2 AND ISO 11801
- PoE+ COMPLIES WITH 802.3at Type 2



PANEL CUT OUT
3:2
(CONNECTOR FRONT VIEW)

TABLE OF PART NUMBERS

PART No.	TRANSMISSION CLASS
RJX8FD5VB	CAT5e
RJX8FD3VB	CLASS D



UNLESS OTHERWISE SPECIFIED TOLERANCE TO BE		THIS DOCUMENT IS THE PROPERTY OF AMPHENOL AUSTRALIA PTY. LTD. NO PART THEREOF MAY BE REPRODUCED AND USED WITHOUT THE PRIOR WRITTEN CONSENT OF THE OWNER.			
LINEAR	ANGULAR	MATERIAL:	DRN:	T.N	DATE: 06/03/14
X ±0.5	X' ±1	REFER SPECIFICATION	CKD:	P.M	DATE: 06/03/14
X.X ±0.1	X.X' ±30'	BREAK ALL SHARP EDGES AND REMOVE ALL BURRS	APP'D:	P.M	DATE: 06/03/14
X.X ±0.05	X.X' ±15'	DO NOT SCALE	FINISH:		
DIMENSIONS IN MILLIMETRES		SCALE: 3:2	SIZE: A3	THIRD ANGLE PROJECTION	

Amphenol Amphenol Australia Pty.Ltd,
22 Industry Blvd, Carrum Downs
VIC 3201 Australia

TITLE:
XLRnet CONNECTOR
D TYPE VERTICAL
CUSTOMER DRAWING

PART No:	REFER TO TABLE OF PART NUMBERS	REV	1
DRAWING No.	55010959-000	SHEET	1/1