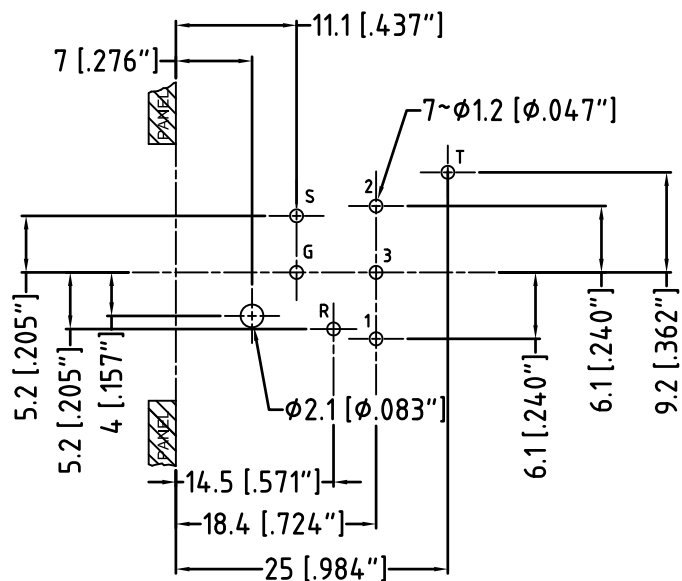
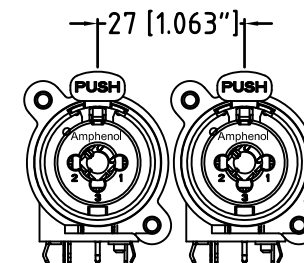
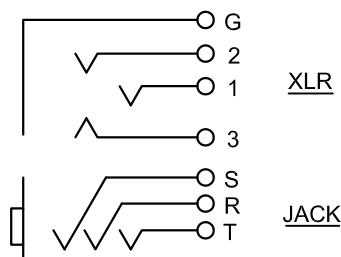


PANEL CUT OUT  
FRONT VIEW



PCB LAYOUT  
(component side)  
TOLERANCE:  $\pm 0.05\text{mm}$  [0.002"]

CONTACTS SCHEMATIC CHART



MIN MOUNTING PITCH  
ACTUAL SIZE

UNLESS OTHERWISE SPECIFIED TOLERANCE TO BE		THIS DOCUMENT IS THE PROPERTY OF AMPHENOL AUSTRALIA PTY. LTD. NO PART THEREOF MAY BE REPRODUCED AND USED WITHOUT THE PRIOR WRITTEN CONSENT OF THE OWNER				1	Correct Minimum Mounting Pitch dimension from 14mm to 27mm	M.H	19-03-09	8811
LINEAR	ANGULAR	CAD FILE: 55010426000111				REV.	FIRST ISSUE	M.H	17-05-07	----
X $\pm$ 0.5	X° $\pm$ 1°					DATE: 17-05-07	TITLE:	CHANGE DETAILS	BY	DATE
X.X $\pm$ 0.1	X°X' $\pm$ 30'	MATL: REFER TO COMPONENT	CKD: P.M	DATE: 19-03-09	ACJC6H C-TYPE					
X.XX $\pm$ 0.05	X°X'X" $\pm$ 15"	DO NOT SCALE	FINISH: REFER TO COMPONENT	APP'D: P.M	DATE: 19-03-09	CUSTOMER DRAWING				DRAWING NO.
BREAK ALL SHARP EDGES AND REMOVE ALL BURRS		DIMENSIONS IN MILLIMETRES		THIRD ANGLE PROJECTION	SCALE: 2:1 UDS	PART No:	ACJC6H	SIZE: A3	55010426-000-1	1 OF 1