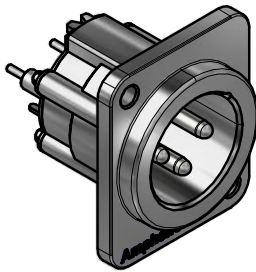


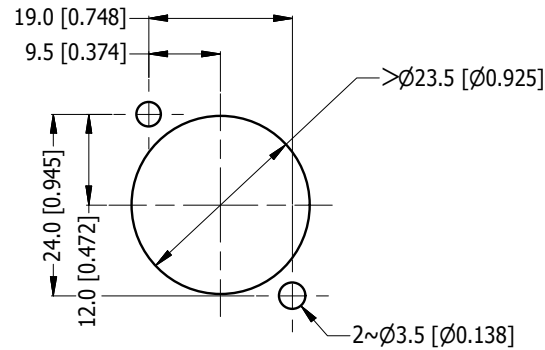
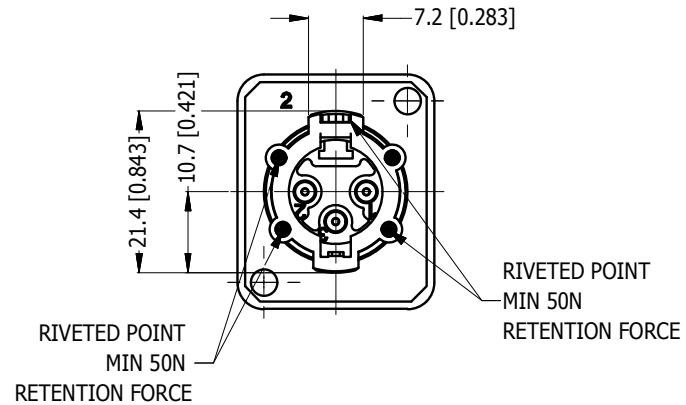
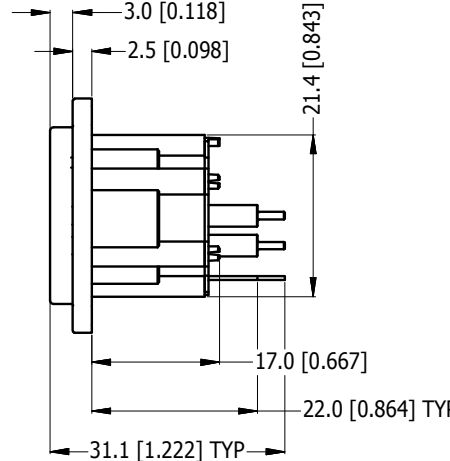
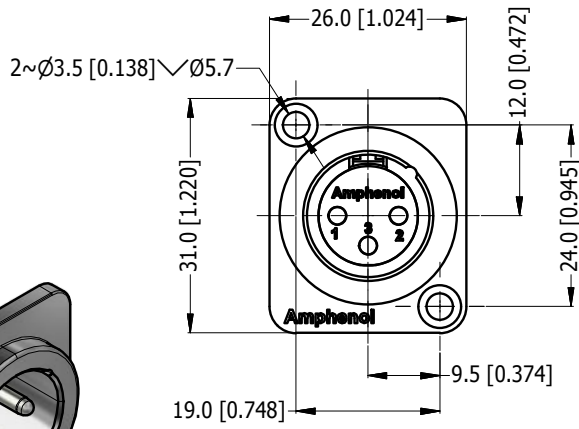
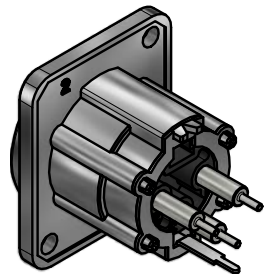
LEGEND = KEY PRODUCT CHARACTERISTICS



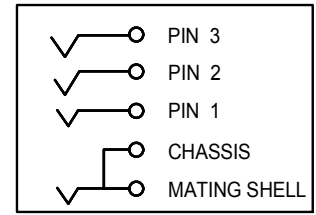
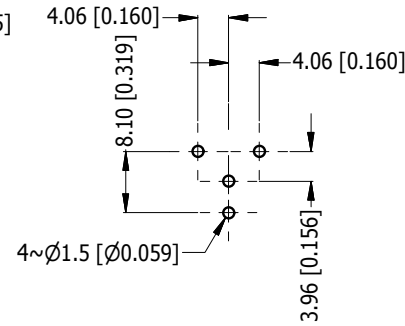
REVISION HISTORY				
REV	DESCRIPTION	DATE	BY	ECN
1	FIRST ISSUE	10/11/17	MH	----



3D VIEW (1:1)



PANEL CUT OUT - REAR MOUNT (SCALE 2:1)



SCHEMATIC CHART

PART NUMBER	SHELL FINISH	PIN CONTACT FINISH
AX3MDV	NICKEL PLATED	SILVER PLATED
AX3MDVB	MATT BLACK COATING	SILVER PLATED
AX3MDV-AU	NICKEL PLATED	GOLD PLATED
AX3MDVB-AU	MATT BLACK COATING	GOLD PLATED

ITEM	PART NUMBER	DESCRIPTION	QTY
4	50300504-100/200	AX PCB PIN CONTACT - GOLD/SILVER PLATED	3
3	51270140-500	AX PIN INSULATOR	1
2	52590069-000	AX SHIELD & GROUND CONTACT - NICKEL PLATED	1
1	53480115-300/400	AX MALE DIECAST SHELL - NICKEL PLATED/MATT BLACK	1

UNLESS OTHERWISE SPECIFIED TOLERANCE TO BE	
LINEAR	ANGULAR
X ± 0.5	X' ± 1
X.X ± 0.1	X.X' ± 30'
X.XX ± 0.1	X.XX" ± 15'

THIS DOCUMENT IS THE PROPERTY OF AMPHENOL AUSTRALIA PTY. LTD. NO PART THEREOF MAY BE REPRODUCED AND USED WITHOUT THE PRIOR WRITTEN CONSENT OF THE OWNER

MATERIAL: **SEE COMPONENT**

DRN: M.H DATE: 10/11/17

CKD: MH DATE: 10/11/17

APP'D: PM DATE: 10/11/17

FINISH: **SEE COMPONENT**

DO NOT SCALE

SCALE: **1:1** SIZE: **A4**

Amphenol Amphenol Australia Pty. Ltd.
22 Industry Boulevard, Carrum Downs, VIC 3201

TITLE: **AX3MDV D-TYPE AX PANEL MOUNT CUSTOMER DRAWING**

PART No. **SEE TABLE**

DRAWING No. **55010999-131-2** SHEET **1/2**

CAD FILE 55010999131111