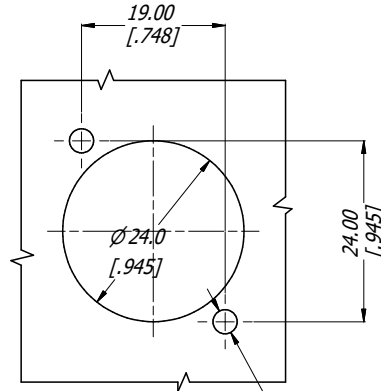


3D VIEW
1:1



PANEL CUT OUT
3:2

SPECIFICATIONS:

1. ELECTRICAL CHARACTERISTICS:

- CAT5e AND CAT6 SUPPORT PoE TYPES 1 TO 4 AND IEC60603-7 COMPLIANT

TABLE OF PART NUMBERS

| PART No. | METAL SHELL FINISH | TRANSMISSION CLASS |
|-----------|--------------------|--------------------|
| RJXS8FG5I | NICKEL | CAT5e |
| RJXS8FG6I | NICKEL | CAT6 |

| | | | | | | | |
|--|-------------|--|-------------------|------------------------|--|---|------------|
| UNLESS OTHERWISE SPECIFIED TOLERANCE TO BE | | THIS DOCUMENT IS THE PROPERTY OF AMPHENOL AUSTRALIA PTY. LTD. NO PART THEREOF MAY BE REPRODUCED AND USED WITHOUT THE PRIOR WRITTEN CONSENT OF THE OWNER. | | Amphenol | | Amphenol Australia Pty.Ltd, 22 Industry Blvd, Carrum Downs VIC 3201 Australia | |
| LINEAR | ANGULAR | MATERIAL: | DRN: T.N | DATE: 04/03/20 | TITLE: | PART No: | REV |
| X ±0.5 | X' ±1 | REFER SPECIFICATION | CKD: P.M | DATE: 04/03/20 | XLRnet IP54 WITH CAP PUNCHDOWN IDC CUSTOMER DRAWING | REFER TABLE P/No | 2 |
| X.X ±0.1 | X.X' ±30° | DO NOT SCALE | APP'D: P.M | DATE: 04/03/20 | | DRAWING No. | SHEET |
| X.X ±0.05 | X.X.X' ±15° | FINISH: | SCALE: 3:2 | SIZE: A3 | | 55011399-000-2 | 2/2 |
| BREAK ALL SHARP EDGES AND REMOVE ALL BURRS | | DIMENSIONS IN MILLIMETRES | | THIRD ANGLE PROJECTION | | | |