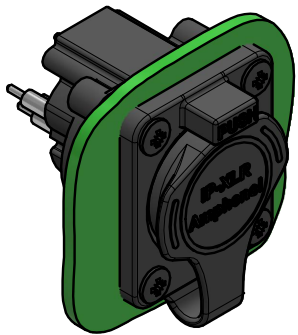
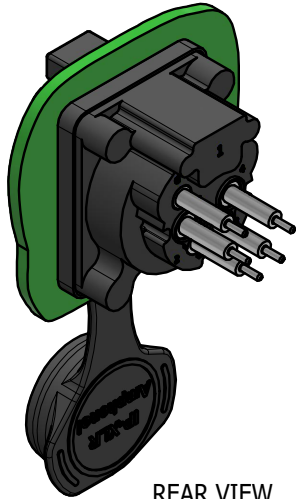




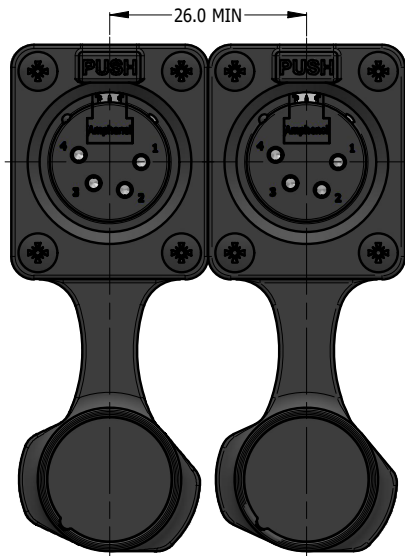
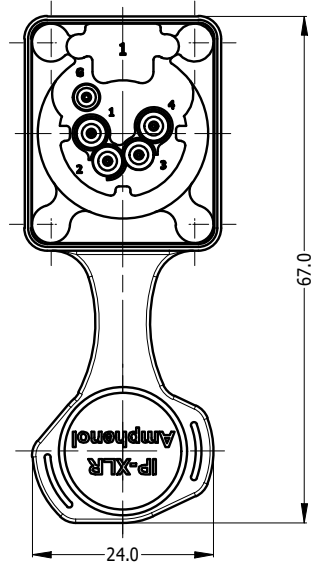
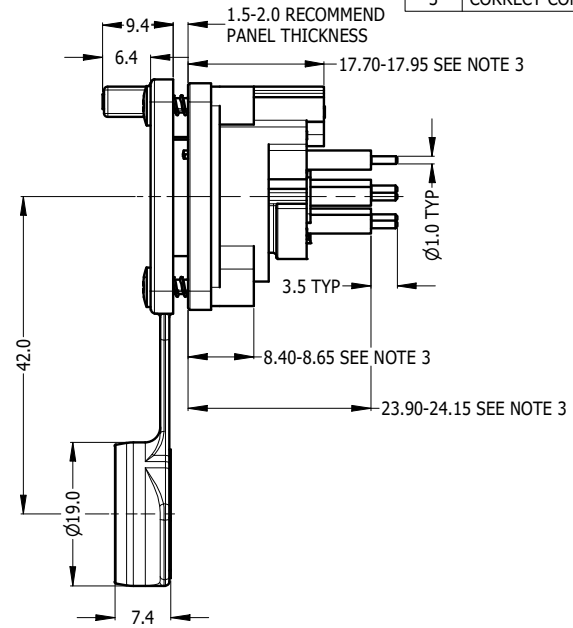
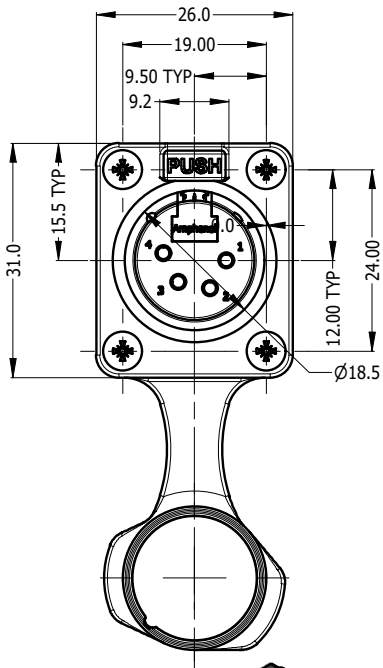
| REV | DESCRIPTION                       | DATE     | BY | ECN  |
|-----|-----------------------------------|----------|----|------|
| 1   | FIRST ISSUE                       | 15-05-23 | MH | ---- |
| 2   | CHANGE LATCHING MECHANISM         | 10-05-24 | MH | 9750 |
| 3   | CORRECT CONTACT HEIGHT TO 24.15MM | 18-03-25 | MH | 9754 |



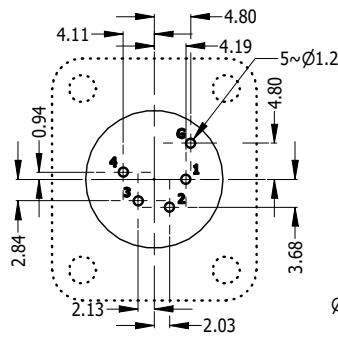
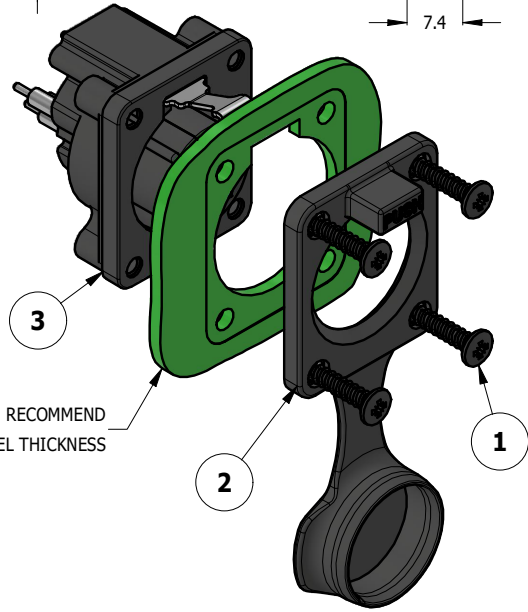
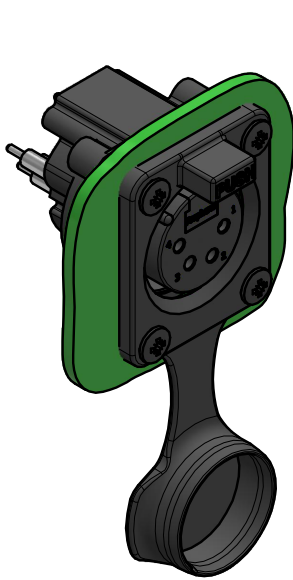
CAPPED VIEW



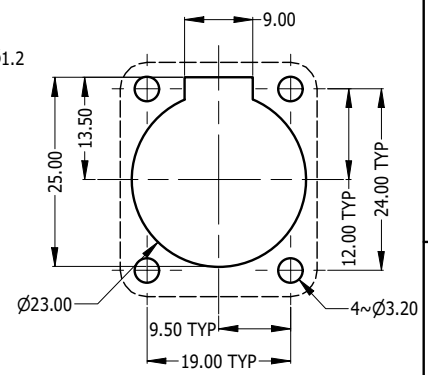
REAR VIEW



RECOMMEND MINIMUM MOUNTING PITCH



PCB LAYOUT  
CONNECTOR SIDE



RECOMMEND PANEL CUT OUT

| PART NUMBER | CONTACT FINISH |
|-------------|----------------|
| AXS4FP1V    | TIN PLATED     |
| AXS4FP1V-AU | GOLD PLATED    |

NOTE:  
 1. MATING CONNECTOR SHELL TO HAVE MIN 1.6 SURFACE FINISH TO ACHIEVE IP RATING OF THIS CONNECTOR.  
 2. BLACK MOUNTING SCREW 52500011-430 x 4 PCS TO BE SUPPLIED WITH THE CONNECTOR, MAX TORQUE 0.5Nm.  
 3. DUE TO 0.4mm THICK RUBBER SEAL, THE DIM WILL VARY DEPENDING ON THE SCREWS TIGHTENING IN ASSEMBLY.

| ITEM | PART NUMBER      | DESCRIPTION  | QTY |
|------|------------------|--|-----|
| 3    | 55011487-014/914 | AXS4FP1V WITHOUT RUBBER FLANGE - TIN/GOLD PLATED CONTACT | 1   |
| 2    | 52730032-000     | AXS OVERMOLDED RUBBER FLANGE BLACK                       | 1   |
| 1    | 52500011-430     | SELF TAPPING SCREW 2.9 x 1.06mm BLACK                    | 4   |

| UNLESS OTHERWISE SPECIFIED TOLERANCE TO BE |             |
|--|-------------|
| LINEAR                                     | ANGULAR     |
| X ± 0.5                                    | X' ± 1      |
| X.X ± 0.2                                  | X.X' ± 30'  |
| X.XX ± 0.1                                 | X.XX" ± 15" |

BREAK ALL SHARP EDGES AND REMOVE ALL BURRS

DO NOT SCALE

THIS DOCUMENT IS THE PROPERTY OF AMPHENOL AUSTRALIA PTY. LTD.  
 NO PART THEREOF MAY BE REPRODUCED AND USED WITHOUT THE PRIOR WRITTEN CONSENT OF THE OWNER

|                                   |                   |                 |
|-----------------------------------|-------------------|-----------------|
| MATERIAL:<br><b>SEE COMPONENT</b> | DRN: M.H          | DATE: 15-05-23  |
| FINISH:<br><b>SEE COMPONENT</b>   | CKD: M.H          | DATE: 10-05-24  |
|                                   | APP'D: P.M        | DATE: 10-05-24  |
| DIMENSIONS IN MILLIMETRES         | SCALE: <b>1:1</b> | SIZE: <b>A4</b> |

**Amphenol** Amphenol Australia Pty.Ltd,  
 22 Industry Blvd, Carrum Downs, VIC 3201

|   |                                      |
|---|--------------------------------------|
| TITLE:<br><b>AXS4FP1V<br/>AXS PANEL MOUNT SERIES<br/>CUSTOMER DRAWING</b> | PART No.<br><b>SEE TABLE</b>         |
| CAD FILE: 55011487814110  | DRAWING No.<br><b>55011487-814-2</b> |
|   | SHEET<br><b>2/2</b>                  |