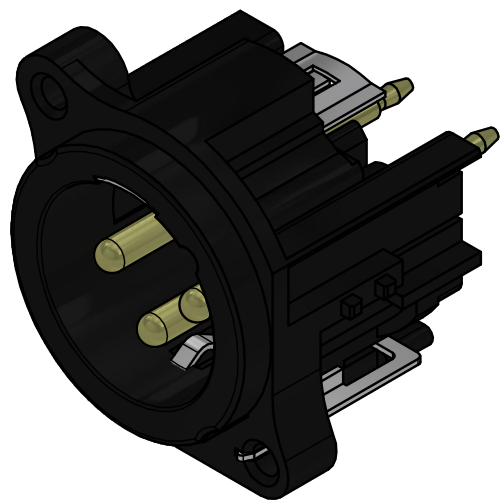
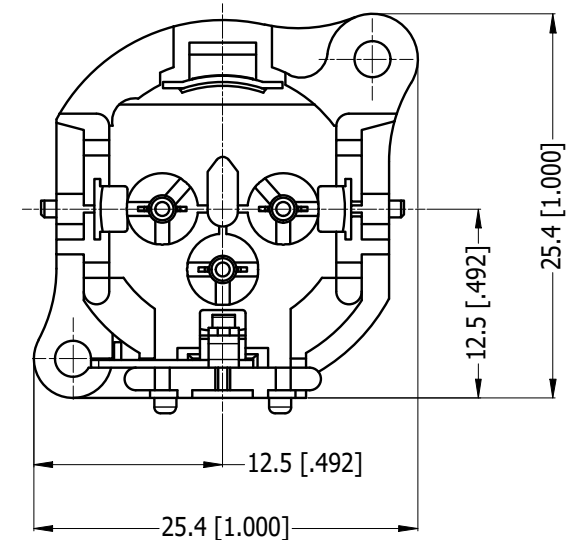
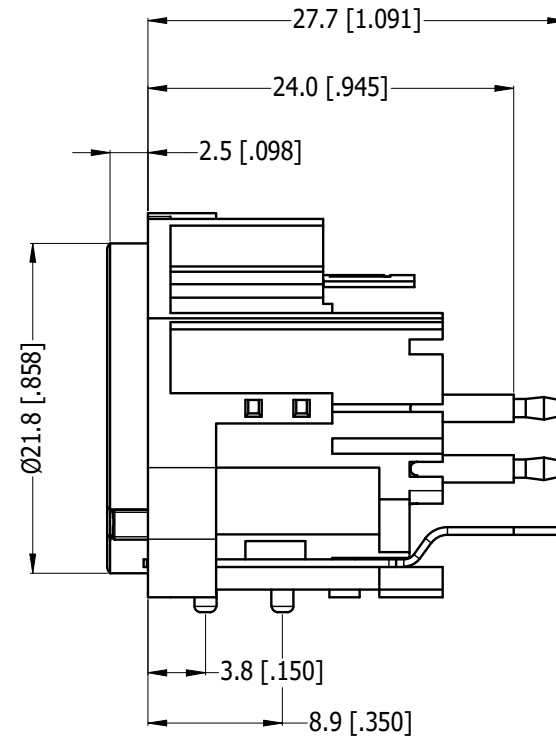
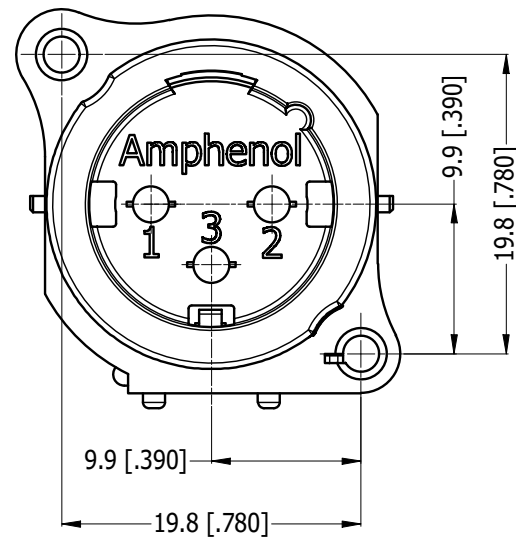
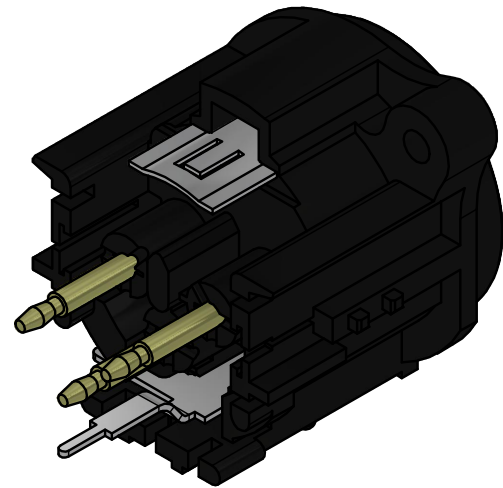


LEGEND ◆ = KEY PRODUCT CHARACTERISTICS

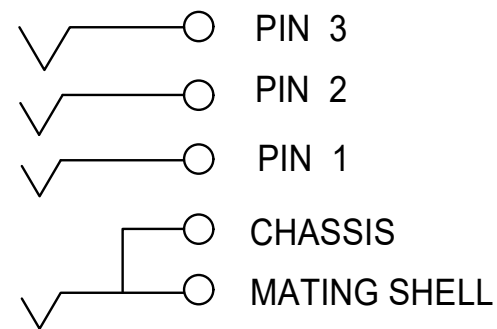


REVISION HISTORY

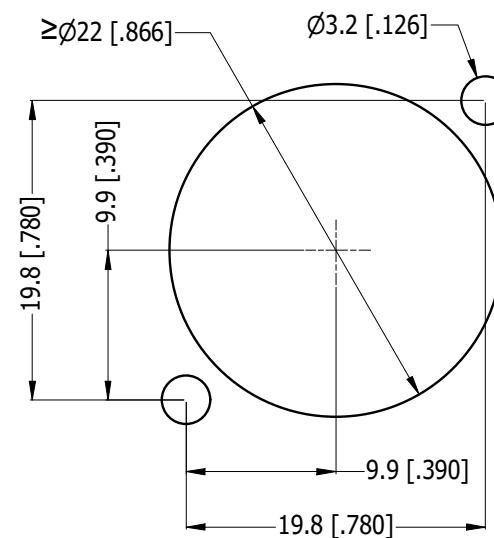
REV	DESCRIPTION	DATE	BY	CHG/No
0	FIRST ISSUE	08-10-14	MH	----
1	UPDATED DIMENSION TO ACTUAL PART	14-08-15	MH	----
2	UPDATE TO CURRENT PRODUCTION	27-08-25	MH	9770



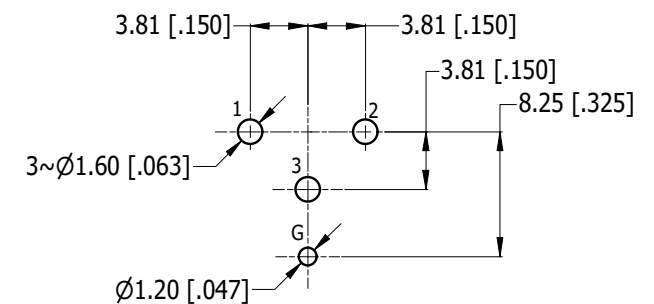
ISO VIEWS



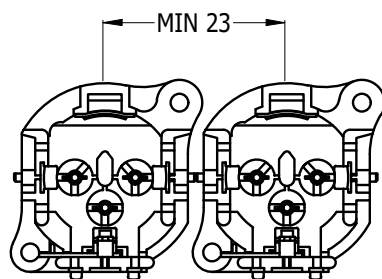
SCHEMATIC CHART



PANEL CUT OUT
REAR VIEW



PCB-LAYOUT
CONNECTOR SIDE
TOLERANCE: ± 0.05mm [.002"]



MIN MOUNTING PITCH
SCALE 1:1

UNLESS OTHERWISE SPECIFIED TOLERANCE TO BE		THIS DOCUMENT IS THE PROPERTY OF AMPHENOL AUSTRALIA PTY. LTD. . NO PART THEREOF MAY BE REPRODUCED AND USED WITHOUT THE PRIOR WRITTEN CONSENT OF THE OWNER				Amphenol Amphenol Australia Pty.Ltd, 22 Industry Blvd, Carrum Downs, VIC 3201	
LINEAR	ANGULAR	MATERIAL: REFER TO COMPONENT	DRN:	MH	DATE:	08-10-14	TITLE: AC3MAV2-AU-PRE VERTICAL MALE CUSTOMER DRAWING
X ±0.5	X' ±1		CKD:	M.H	DATE:	27-08-25	
X.X ±0.2	X.X' ±30'		APP'D:	P.M	DATE:	27-08-25	
X.XX ±0.1	X.XX" ±15'	FINISH: REFER TO COMPONENT	SCALE:	2:1	SIZE:	A3	PART No: AC3MAV2-AU-PRE
BREAK ALL SHARP EDGES AND REMOVE ALL BURRS		DO NOT SCALE		DIMENSIONS IN MILLIMETRES		CAD FILE: 55011051000222	DRAWING NO. 55011051-000-2
							SHEET 2/2