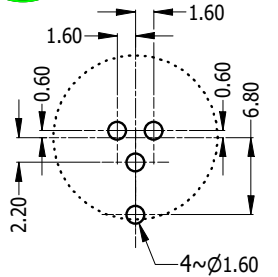
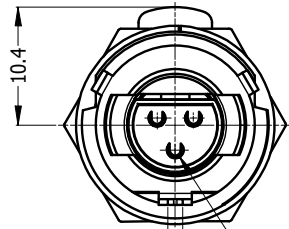


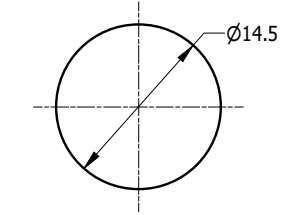
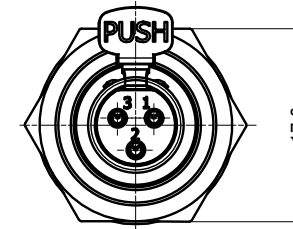
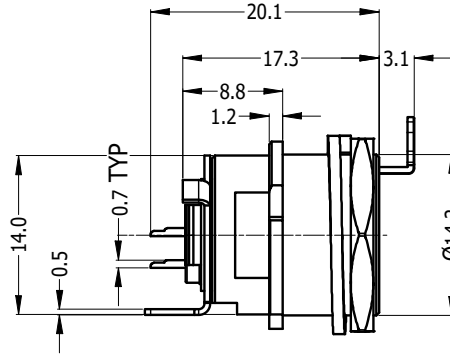
LEGEND = KEY PRODUCT CHARACTERISTICS



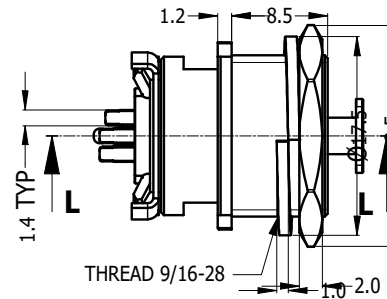
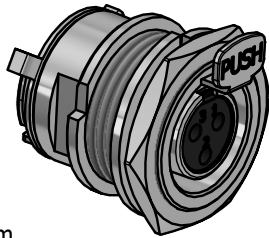
RECOMMEND PCB LAYOUT



3~Ø1.4 SOCKET CONTACTS
1.3 GROUND CONTACT

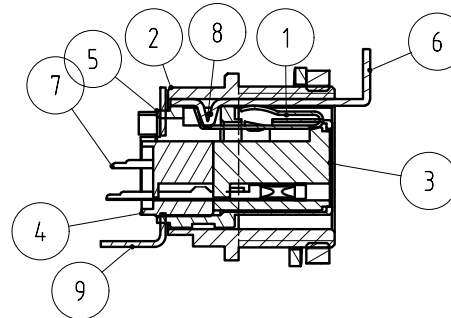


RECOMMEND PANEL CUT OUT

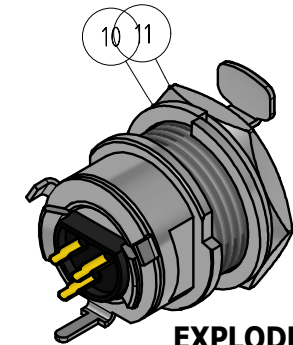


METAL WASHER

METAL NUT



SECTION L-L



EXPLODED VIEW

Specification:
 Electrical
 Contact resistance: <0.03 ohm
 Insulation resistance: >500Megaohm
 Dielectric strength: 1000VDC
 Rated current: 5A
 Mechanical
 Lifetime: Insert & withdraw >5000 cycle
 Insertion 6.1 lb/withdrawal 5.6 lb Max.

11	50300395-321	METAL NUT - BRASS - Ni PLATED	1
10	50300332-321	SPRING METAL WASHER - K5 Ni PLATED	1
9	50300329-323	GROUND CONTACT - BRASS - Ni PLATED	1
8	52370008-532	SPRING - SUS 304	1
7	50300336-121	SOCKET CONTACTS - BRASS - Au PLATED	3
6	52080006-331	PUSH LEVEL - BRASS - Ni PLATED	1
5	50300331-321	MACHINED SHELL - BRASS - Ni PLATED	1
4	51270116-531	REAR INSULATOR - PPS - BLACK	1
3	51270115-531	FRONT INSULATOR - PPS - BLACK	1
2	50300325-300	MACHINED HOUSING - BRASS - Ni PLATED	1
1	50300330-321	LATCH SPRING - SUS 304 - Ni PLATED	1
ITEM	PART NUMBER	DESCRIPTION	QTY

UNLESS OTHERWISE SPECIFIED TOLERANCE TO BE		THIS DOCUMENT IS THE PROPERTY OF AMPHENOL AUSTRALIA PTY LTD NO PART THEREOF MAY BE REPRODUCED AND USED WITHOUT THE PRIOR WRITTEN CONSENT OF THE OWNER	
LINEAR	ANGULAR	MATERIAL:	DRN: MH DATE: 25/02/13
X ±0.5	X' ±1	SEE PART LIST	CKD: M.H DATE: 01/04/19
X.X ±0.2	X.X' ±30°	FINISH: SEE TABLE	APP'D: P.M DATE: 01/04/19
X.XX ±0.1	X.XX" ±15'	DO NOT SCALE	SCALE: 2:1 SIZE: A4
BREAK ALL SHARP EDGES AND REMOVE ALL BURRS		THIRD ANGLE PROJECTION	

Amphenol Amphenol Australia Pty.Ltd, 22 Industry Blvd, Carrum Downs, VIC 3201	
TITLE: MINI XLR 3SKT PCB FEMALE PANEL MOUNT CUSTOMER DRAWING	PART No: AG3FCE
CAD FILE: 55010861000112	DRAWING NO. 55010861-000-1
	SHEET 1/1